

SOLARMAN SMART HOMEOWNER ACCOUNT REGISTRATION

Welcome to the Fortress Power monitoring experience!

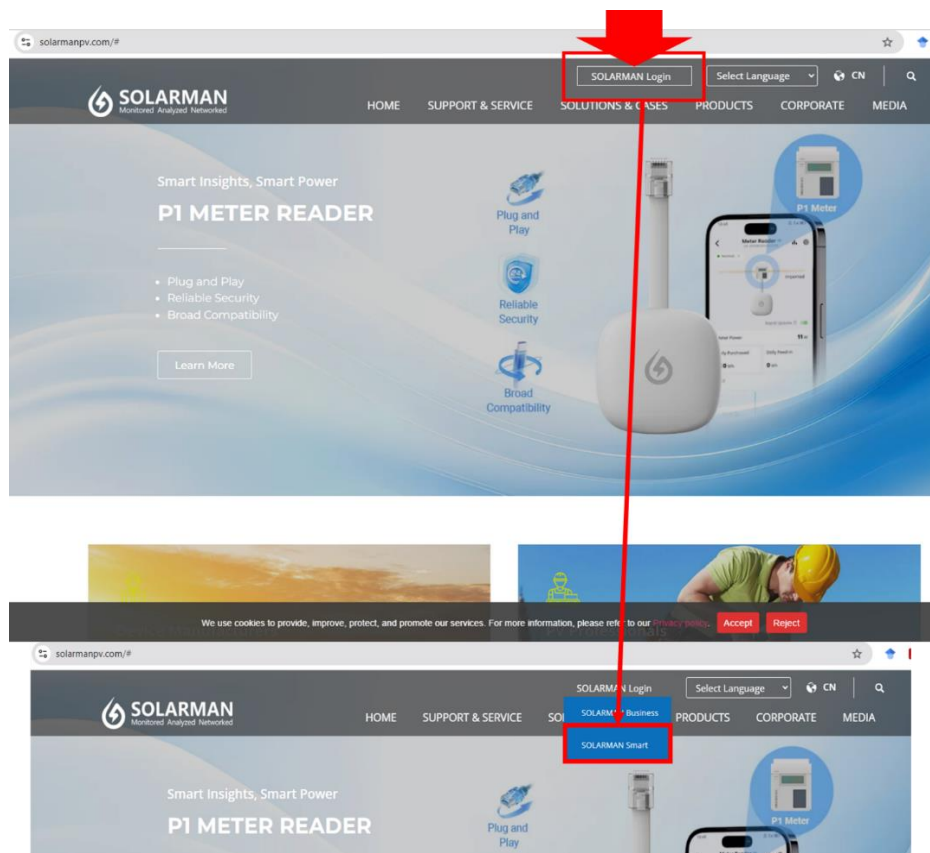
This guide will help you create your **Solarman Smart Homeowner Account**, which allows you to easily monitor your solar energy system's performance anytime, anywhere.

With your Solarman account, you can view real-time energy production, track battery status, review historical data, and receive important system updates, all through the Solarman Smart mobile app or web portal.

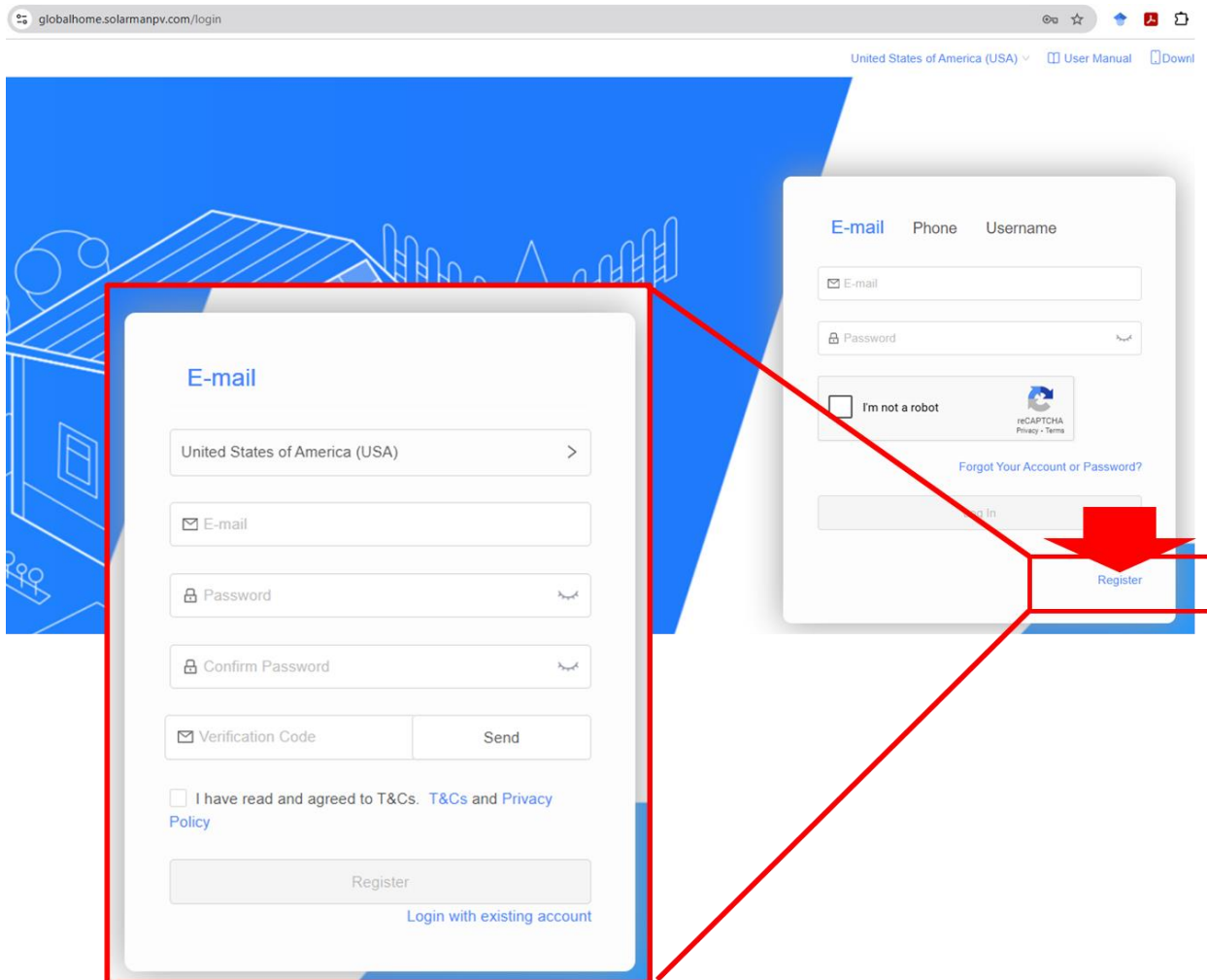
Creating your account is quick and simple, and once set up, you'll have full visibility into your Fortress Power system's energy flow and performance data.

Important! To track your solar energy data, you must create a Solarman Smart Homeowner Account. Fortress Power systems use Solarman for monitoring, and data access is unavailable without an active account. All monitoring features are subject to Solarman's terms and privacy policy.

1. Go to solarmanpv.com, click "SOLARMAN Login," and select "SOLARMAN Smart."

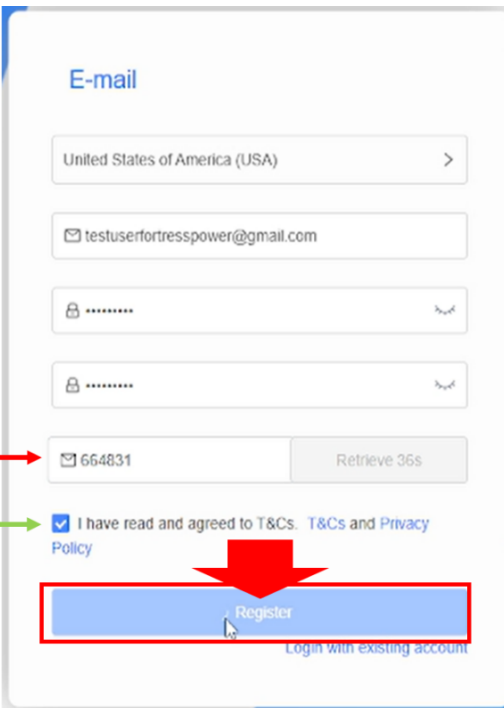


2. A new page will open for the SOLARMAN Smart Homeowner login. Click “Register” (highlighted in a red rectangle) and fill out the required information to complete your account registration.



The screenshot shows a web browser window with the URL globalhome.solarmanpv.com/login. The page features a blue header with the text "United States of America (USA)" and links for "User Manual" and "Download". The main content area has a blue background with a white line-art illustration of a house and solar panels. Overlaid on this is a white registration form titled "E-mail". The form includes fields for "United States of America (USA)" (with a dropdown arrow), "E-mail", "Password", "Confirm Password", and "Verification Code" (with a "Send" button). Below these fields is a checkbox for "I have read and agreed to T&Cs. [T&Cs](#) and [Privacy Policy](#)". At the bottom of the form is a "Register" button and a link for "Login with existing account". A red rectangle highlights the entire registration form, and a red arrow points to the "Register" button on the right side of the page.

3. **Verify Your Email:**
After filling out the registration information, click “Send” to receive a verification code in your email.
Enter the verification code, check the agreement approval box, and then click “Register” to complete the process.



E-mail

United States of America (USA) >

testuserfortresspower@gmail.com

664831 Retrieve 36s

☒ I have read and agreed to T&Cs. [T&Cs and Privacy Policy](#)

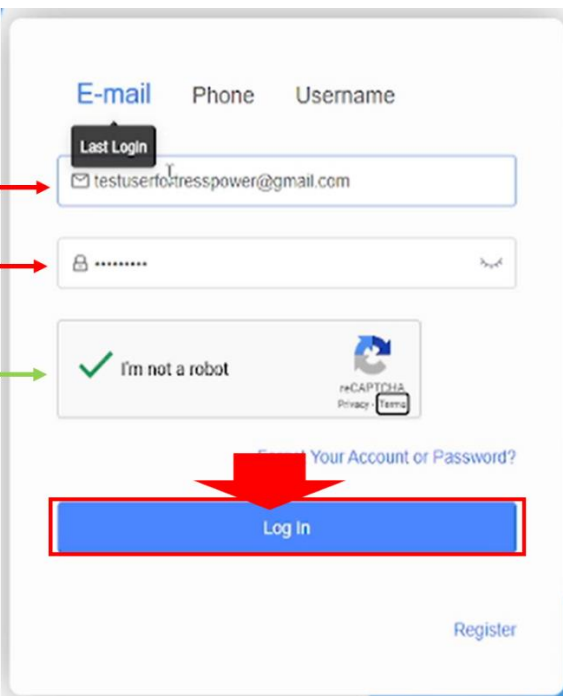
Register

[Login with existing account](#)

Annotations:

- Verification code → 664831
- the agreement approval box → ☒ I have read and agreed to T&Cs. [T&Cs and Privacy Policy](#)


4. After completing the registration, the website will return to the login page. Enter the email and password you used during registration, check the “I am not a robot” box, and then click “Log In” to access your account.



E-mail Phone Username

Last Login

testuserfortresspower@gmail.com

☒ I'm not a robot 

Forgot Your Account or Password?

Log In

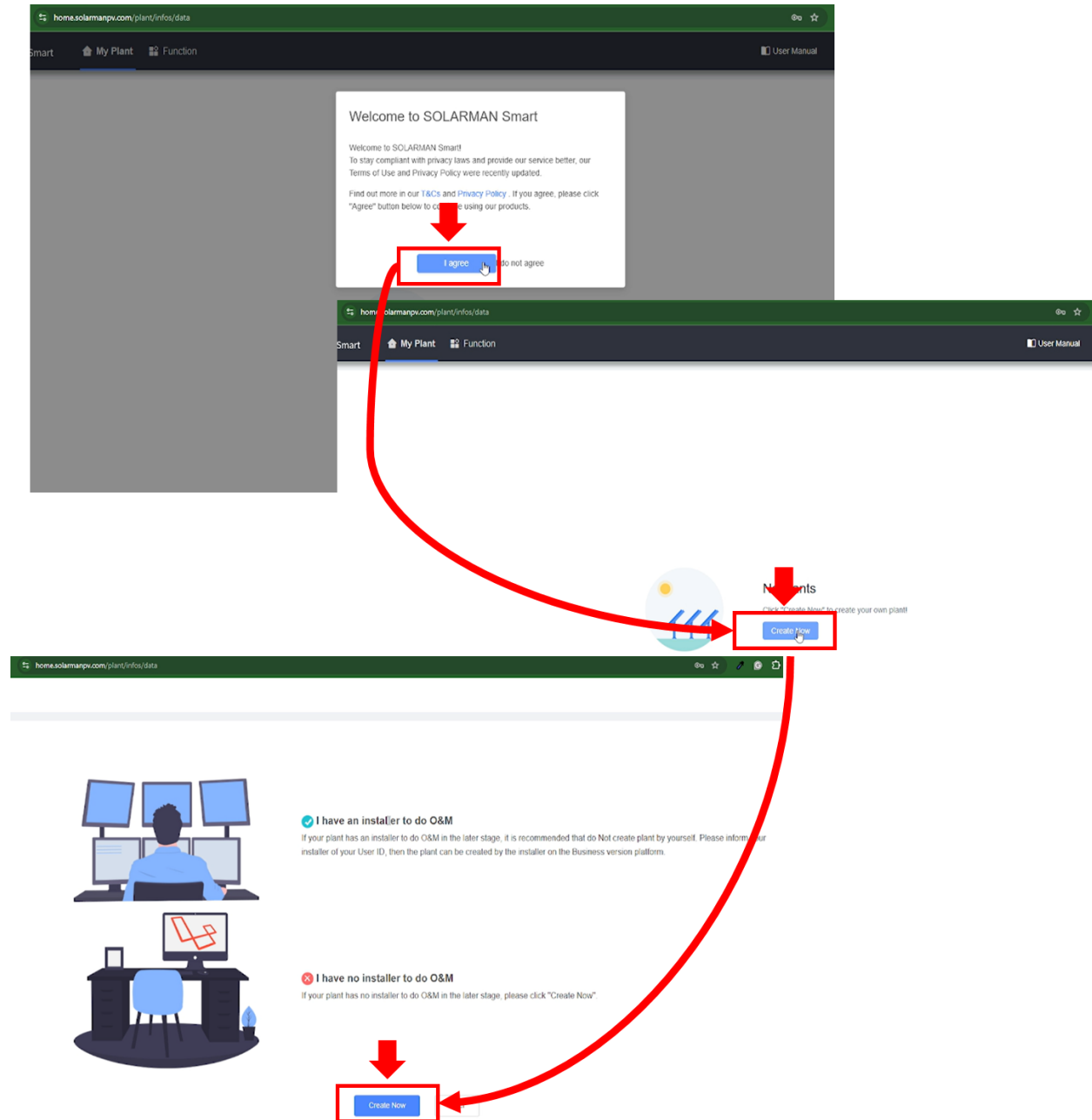
[Register](#)

Annotations:

- Registered e-mail → testuserfortresspower@gmail.com
- Password → *****
- “I am not a robot” box → ☒ I'm not a robot

5. Create a Plant

5.a Once logged in, click the “I Agree” button on the initial screen. Then, begin creating your plant by clicking the “Click Now” button on the current page, and again on the next page when prompted.



5.b. Enter the plant name, add the address, and select the appropriate time zone for your location.

Create

Basic Info

System Info

Yield Info

Basic Info

Plant Name:

Fortress PA test lab

Plant Location:

Please enter plant address

2010 Cabot Blvd

Coordinate:

Longitude: -74 51 39.37 Latitude: 40 11 24.75

Administrative Area:

United States Pennsylvania

Address:

2010 Cabot Blvd

Time Zone:

(UTC-05:00) Central America

Type the address and choose the time zone

5.c. Fill out the System Information and Yield Information sections, then click the “Finish” button to complete the setup.

System Info

Plant Type:

Industrial Rooftop

System Type:

Off-grid Energy Storage System

Installed Capacity (Unit: kWp):

6

Operating Date:

2025-10-30

Yield Info

Currency:

USD

Unit Price (Unit: USD/kWh):

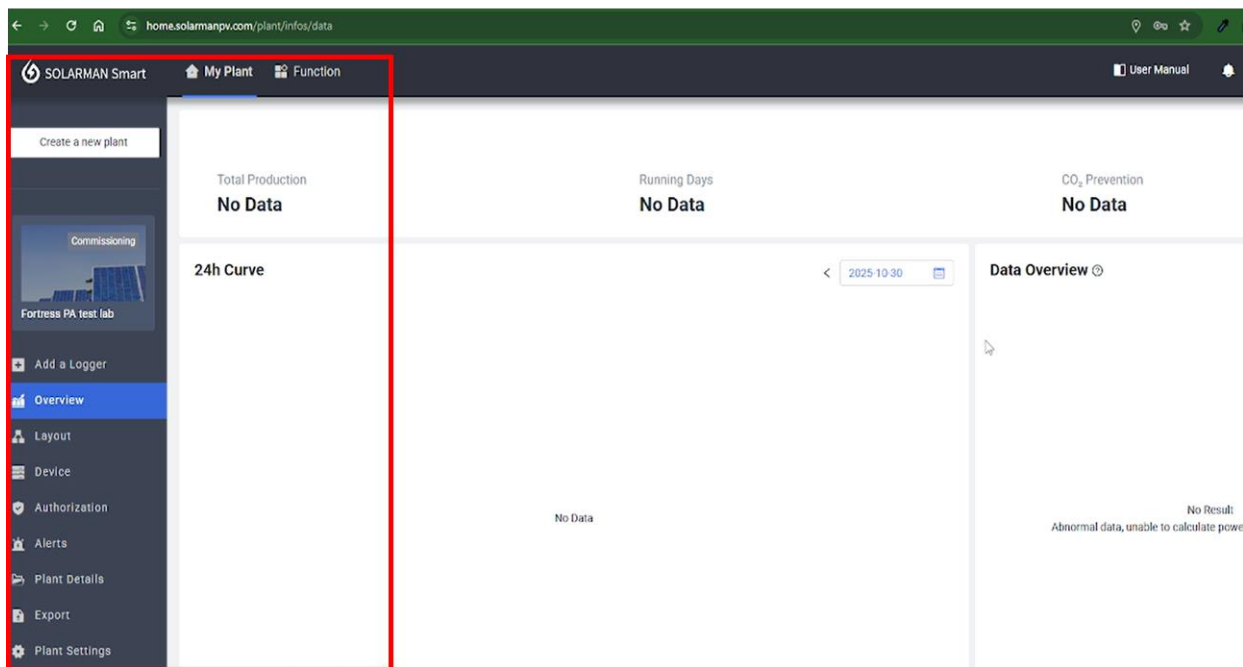
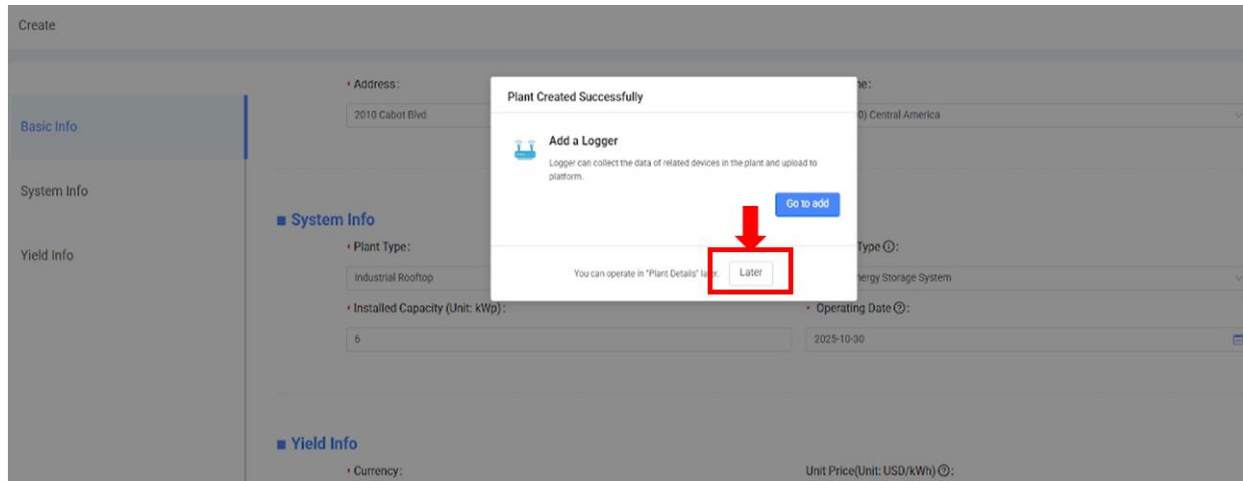
0.09

Total Cost (Unit: USD):

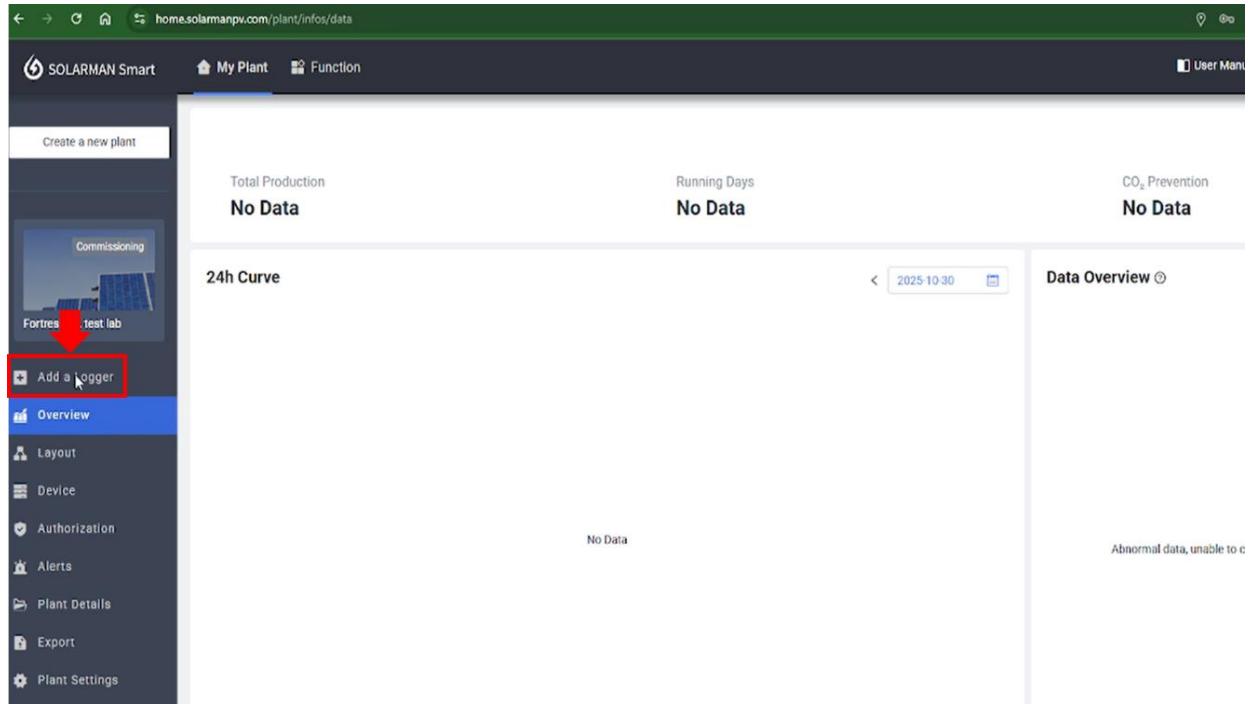
1

Finish

5.d. Once the setup is complete, the system will prompt you to add a logger. Click “Later”, and the plant will be created and displayed on your dashboard as shown below.



5.e. To add a logger, navigate to the menu on the left side of the platform and click the “Add Logger” option.



5.f. Enter the serial number (SN) of the logger and click “Add.” The logger will then be added to your plant.

Type the SN of the logger and click the add

