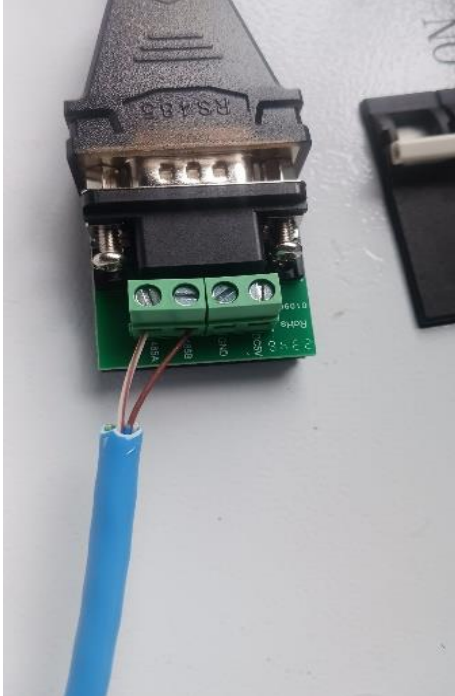


eFlex Max Firmware Update

Document Version	Notes
EMFU 1.0	

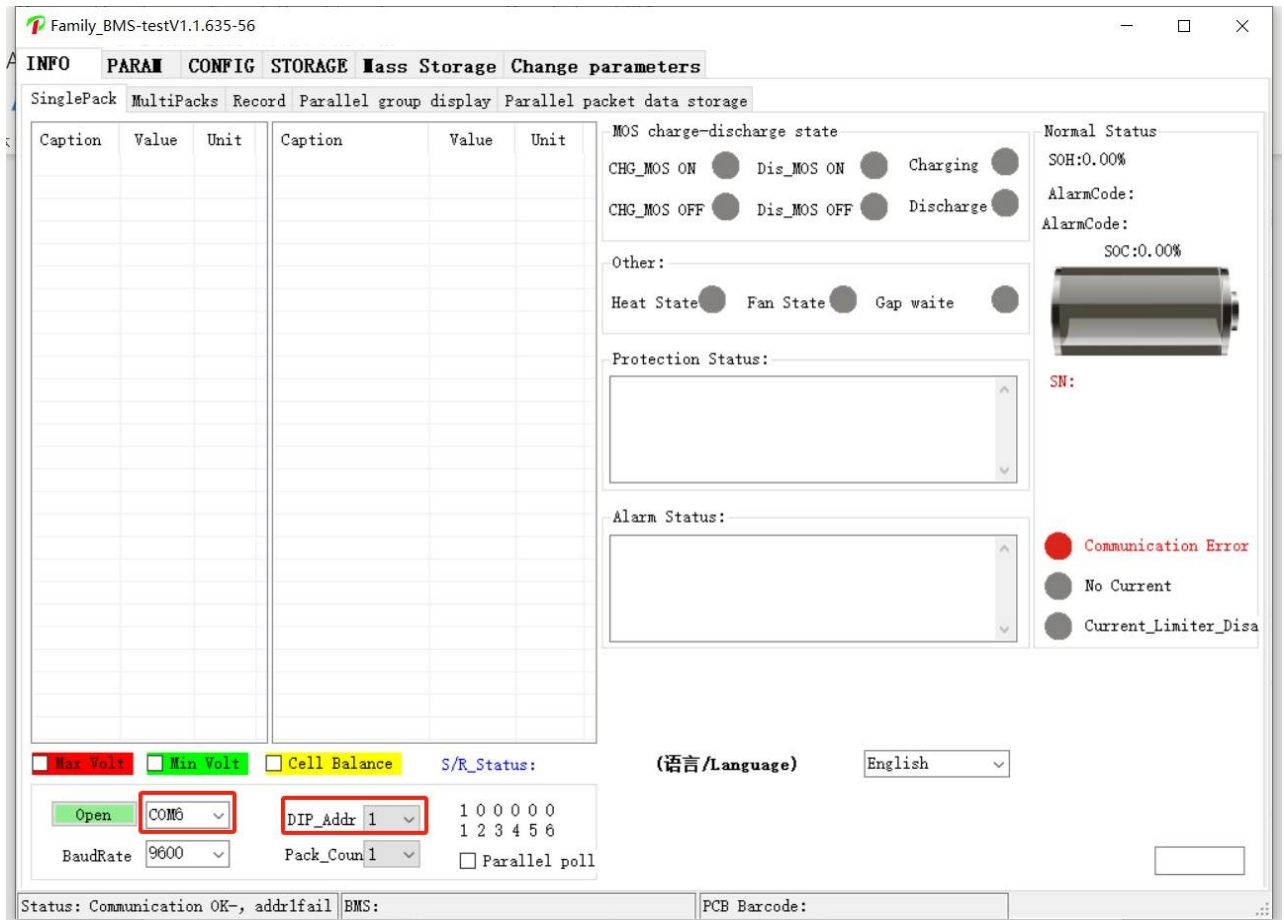


Configure Modbus Tool

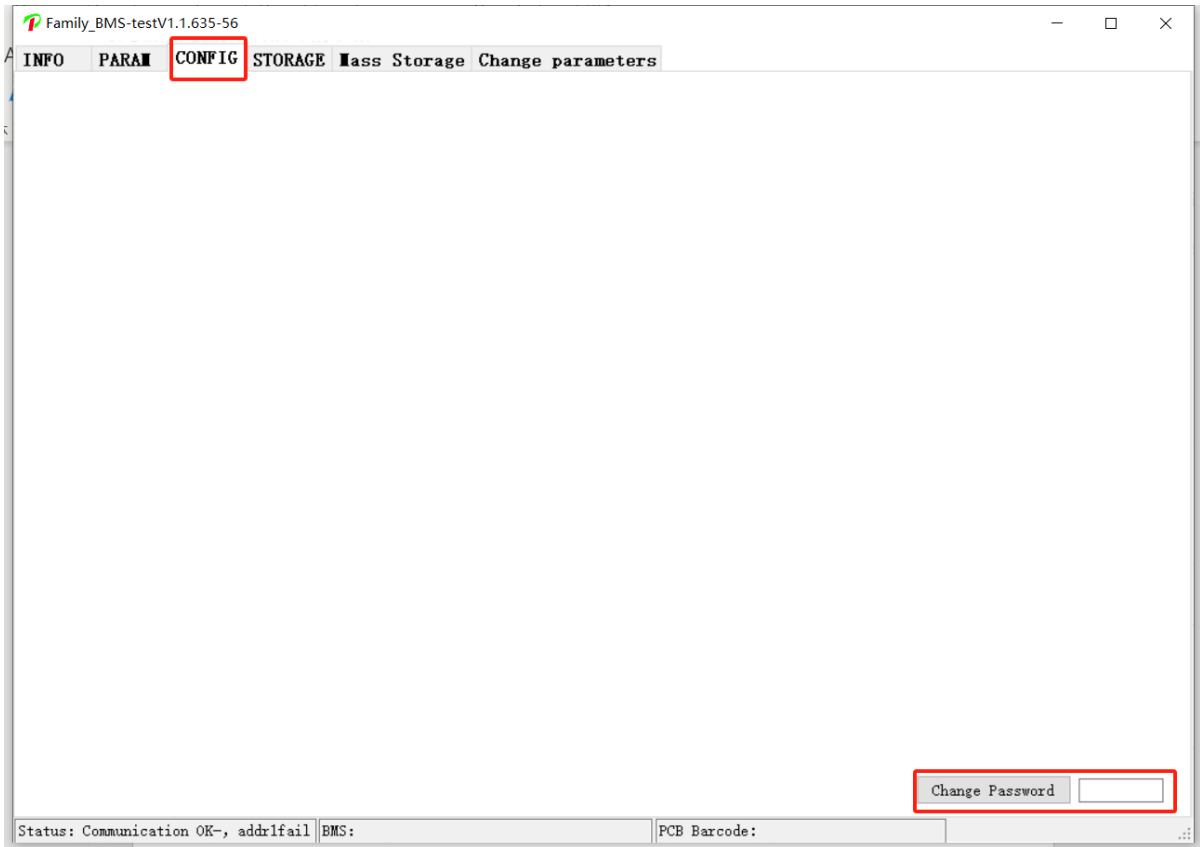
- Using the Modbus tool with a RJ45 T-568B cable, make sure the pin 7 (cable brown-white) is in the RS485A port and the pin 8 (Brown) is in port RS485B.
- Connect the RJ45 plug to the "Up-Link port of the eFlex MAX" and the USB side on a Windows laptop computer

Firmware Update

- Open the upper computer software, select the correct COM port according to the actual computers COM port and select DIP Addr to 0. If, Successful, data should start populating.

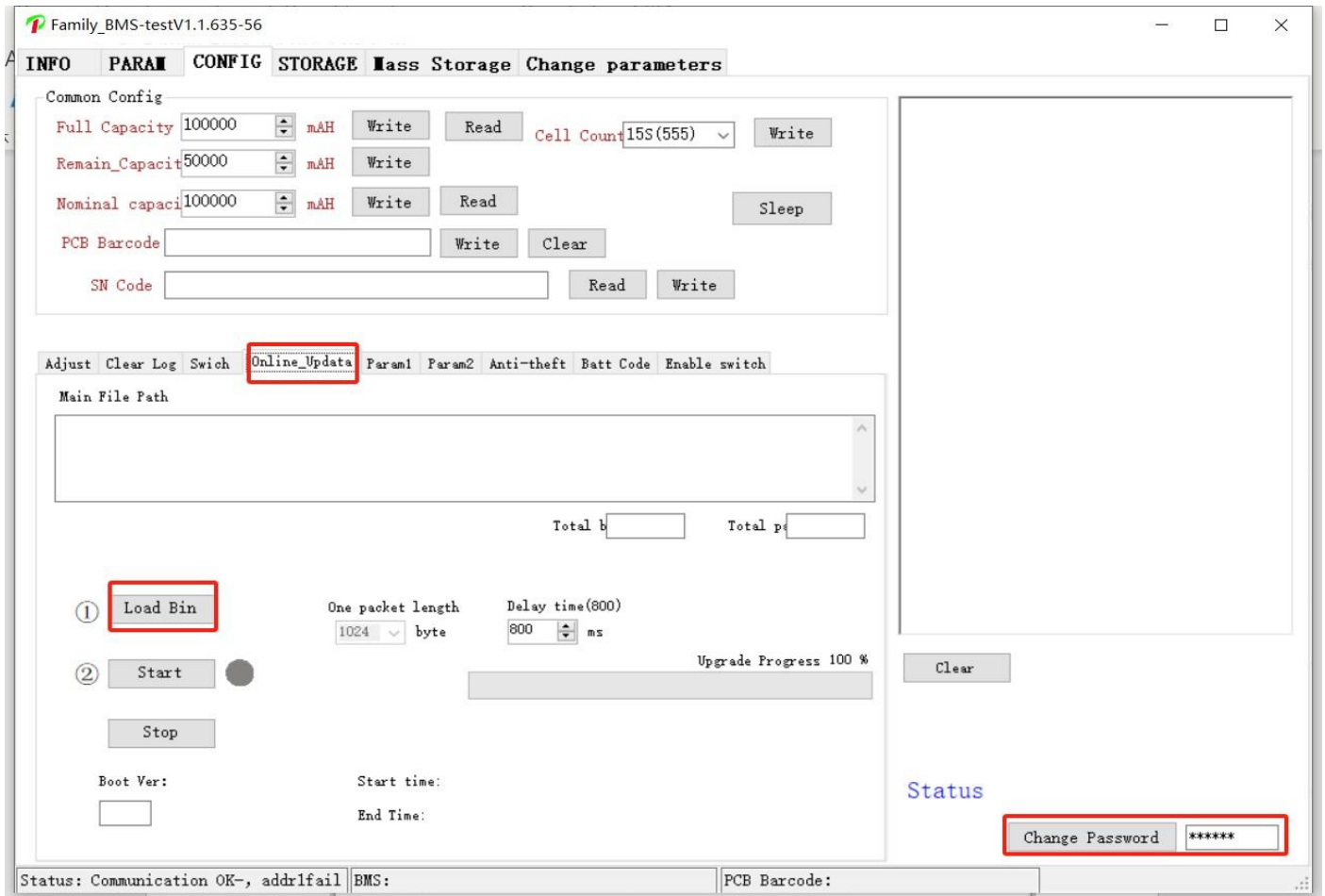


2. Select the CONFIG option and enter the password in the password box: 888888

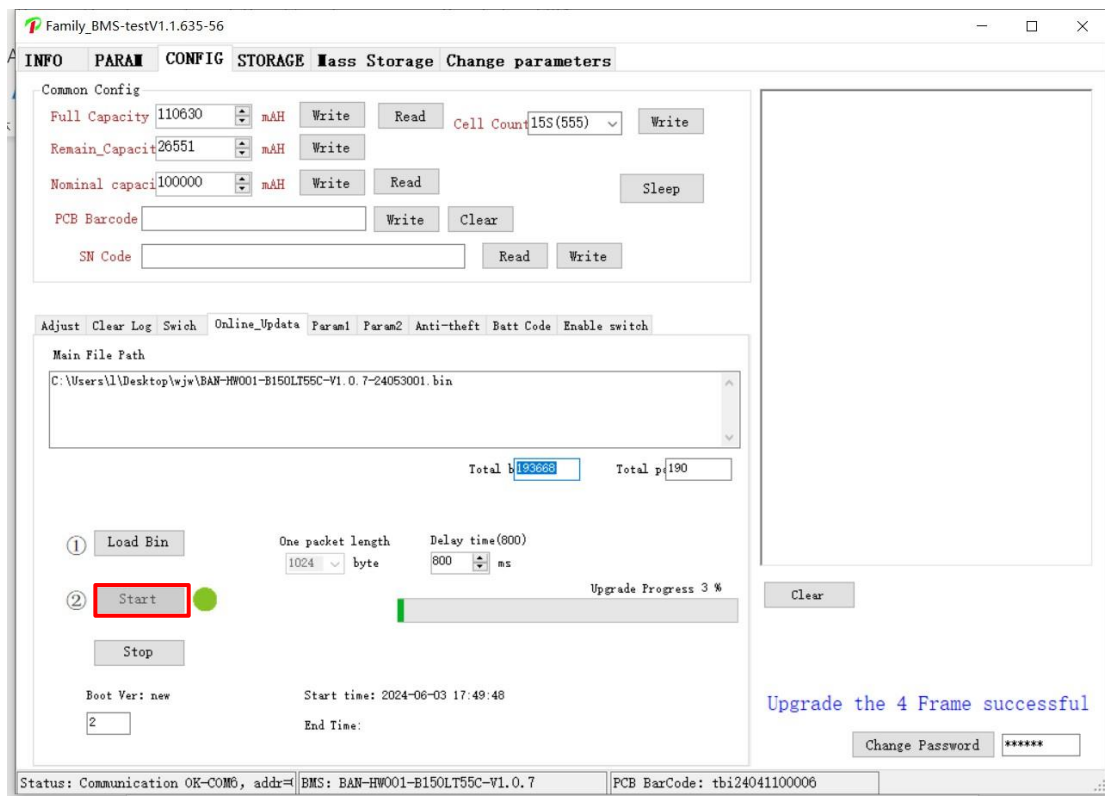


3. After entering the password, the following interface appears.
Select Online_Update and click Load_Bin to select the desired bin file:

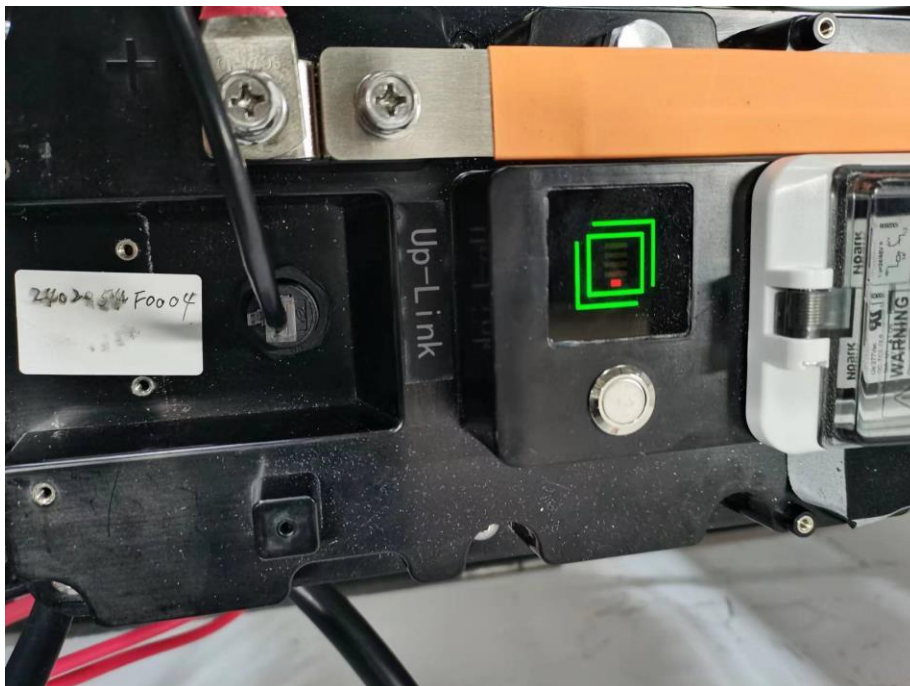
BAN-HW001-B150LT55C-V1.1.5 (1).bin



- After selecting the file, click Start and wait for the upgrade to end.



- Confirm that the firmware is being uploaded into the battery by observing the battery LED light up as shown in the below picture



- Once it is completed, the battery will make a beeping sound and reboot. You should see the SOC indicators. Remove Modbus tool cable and proceed with installation/commissioning process.