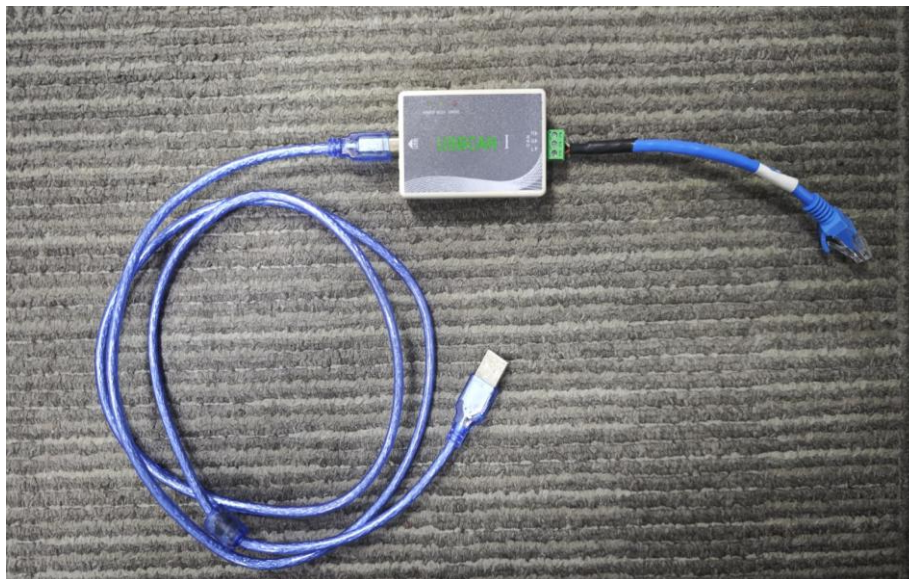




## PRE-REQUIREMENTS

To perform this procedure, you will need the following:

1. Windows Laptop Computer
2. USB CANtool
  - a. You may request this tool by submitting a ticket on the support section at [www.fortresspower.com/support](http://www.fortresspower.com/support)



3. Download the firmware and instructions before arriving to the site. You may download these files at [www.fortresspower.com/firmware](http://www.fortresspower.com/firmware). Try to consolidate your files under one folder for ease of access. **Extract all files.**

NEW: 30 Year Extended Warranty for Residential Customers! Click for Details!

Select Product

eForce

Go!

Please: **DO NOT** update any Fortress Power firmware unless directed by Fortress Power technical support. Updating ENVY, eFlex and dVA firmware requires a Windows laptop, a Fortress Power CANbus tool, and hardware drivers.  
Fortress Power installers wishing to perform firmware updates should request a firmware update tool and setup assistance by submitting a support ticket at [support.fortresspower.com](http://support.fortresspower.com)

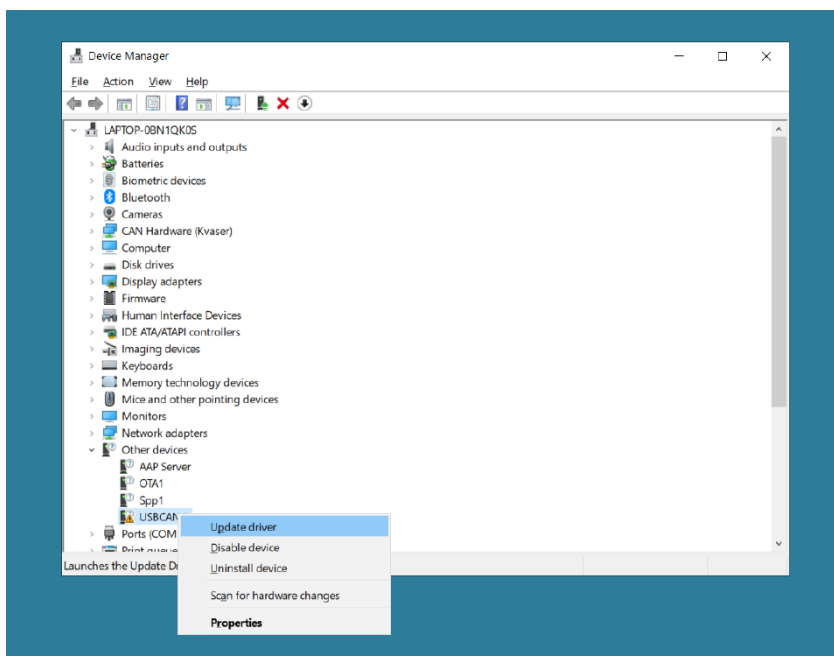
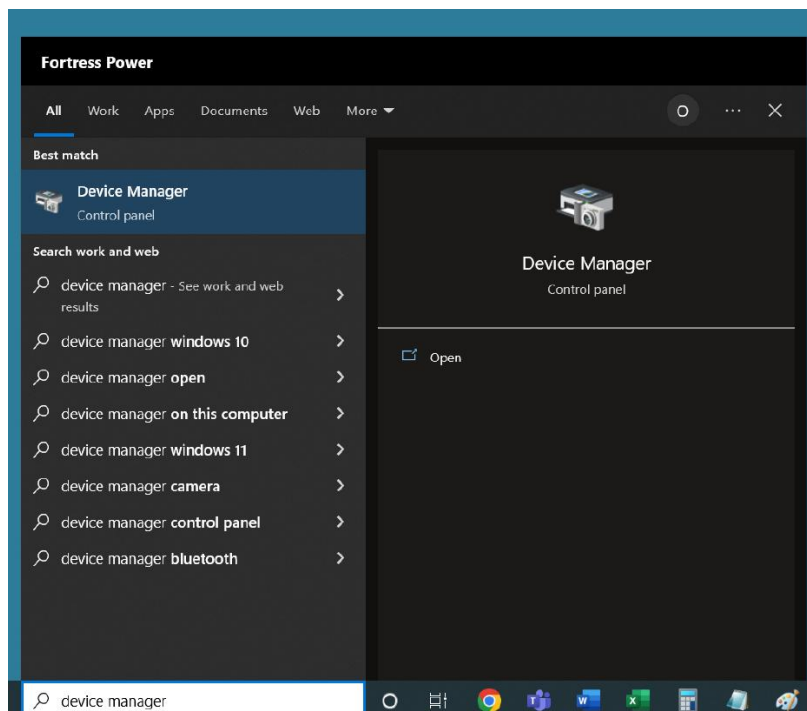
Type	Version	Product	Last modified	Download
Software	BMS Software Update	eForce	10-11-2025	
PDF	BMS Firmware Release Notes	eForce	02-06-2025	
Driver	CANtool Drivers	eForce	18-02-2025	
Firmware	Firmware Update	eForce	02-06-2025	
PDF	README Disclaimer	eForce	18-02-2025	

Chat with Us  
You can't be here!



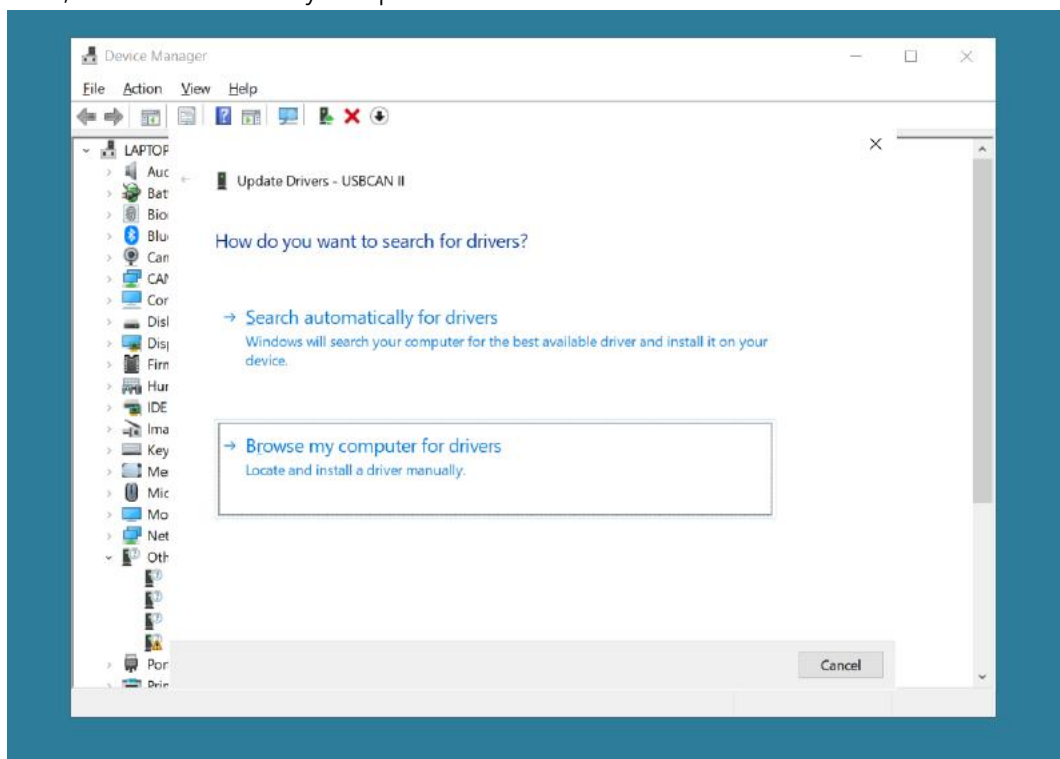
## INSTALLING THE DRIVERS FOR THE CANTOOL (USBCAN)

1. Connect the USB cable of the CANTool (USBCAN) to your computer and the CANTool by itself.
2. Click on the "Start" icon (looks like a Windows logo) and type in "device manager". Above the search-bar, click on "Device Manager".
3. A window similar to the one shown below will open and one of the items of the list will be "USBCAN II" with an indent on the left. Right-click on this "USBCAN II" and from the drop-down click on "Update driver".

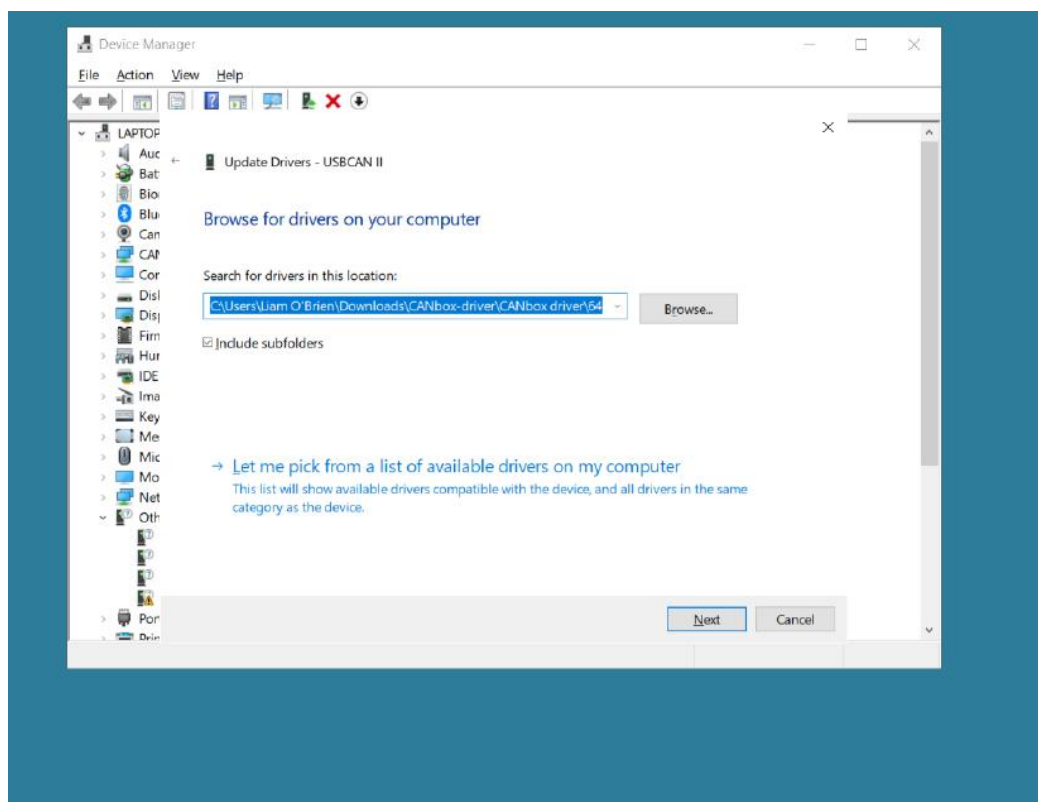




- Next, click on "Browse my computer for drivers".

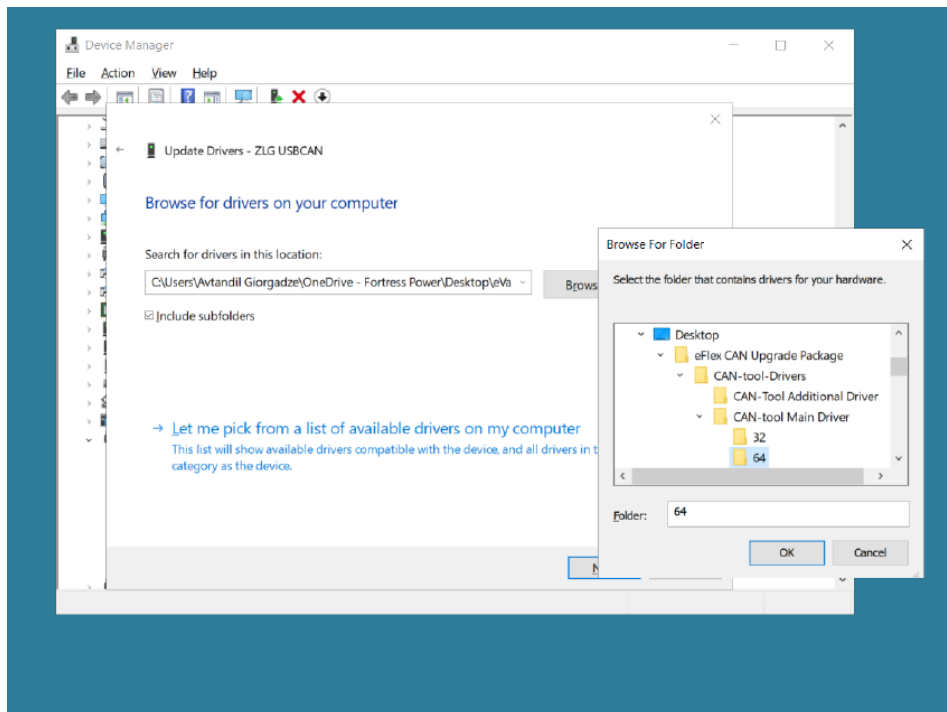


- Now, click on "Browse..."

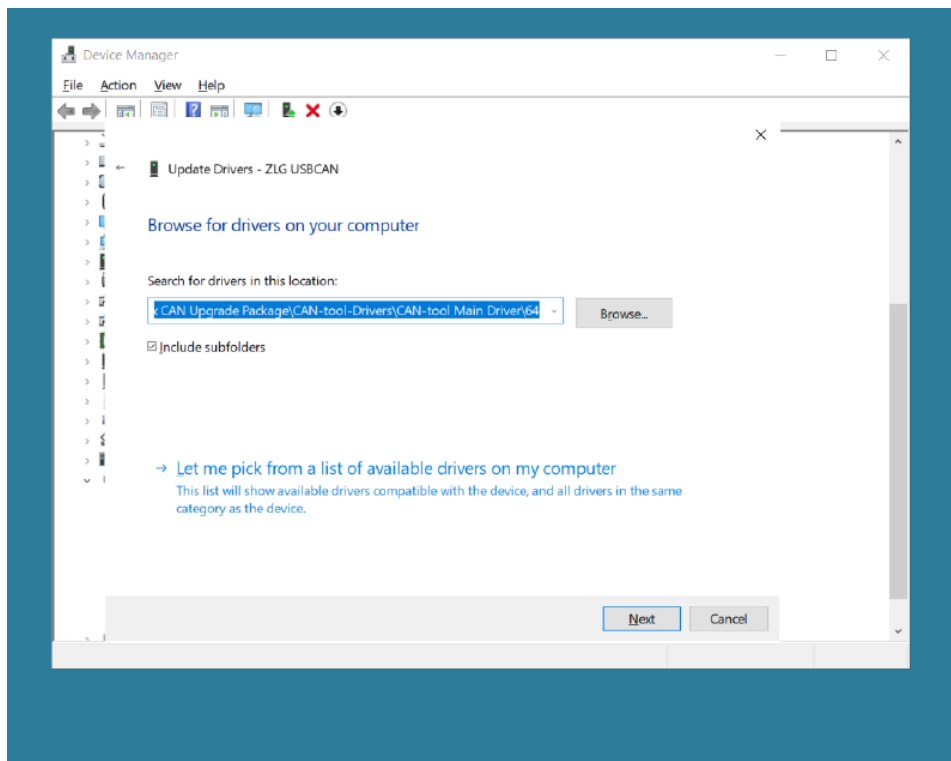




- Then, navigate to the "eForce CAN Upgrade Package"(where you consolidated and from there navigate as follows: "eForce CAN Upgrade Package" >>> "CAN-tool Drivers" >>> "CAN-tool Main Driver" >>> "64". Once "64" is selected, click "OK".

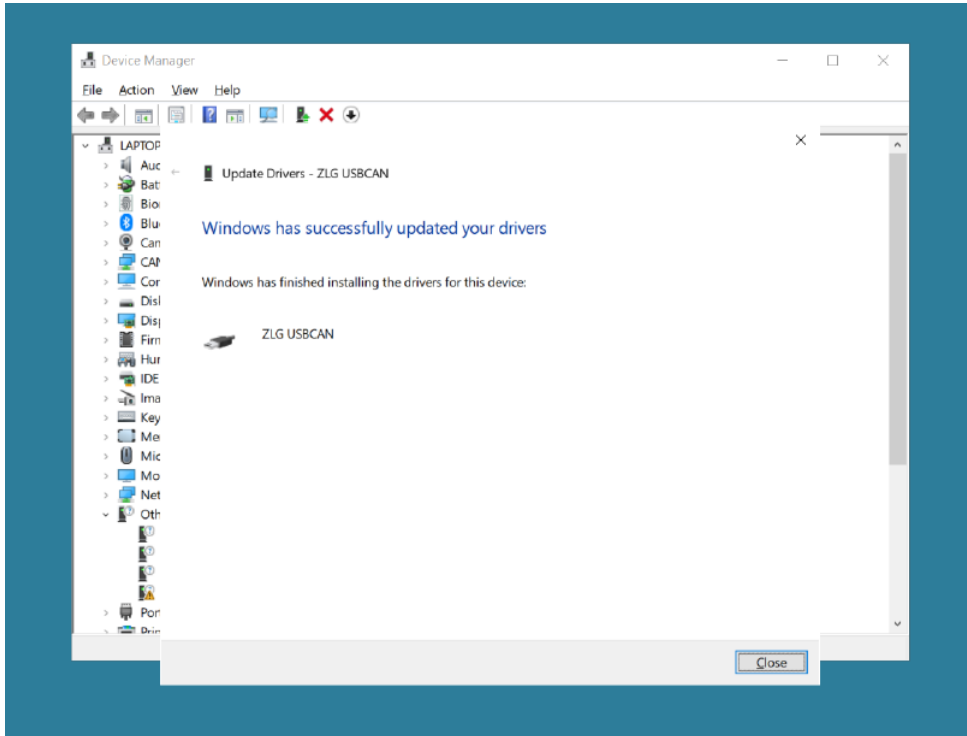


- Then, click "Next".

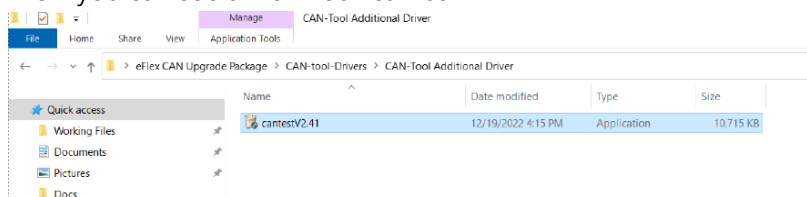




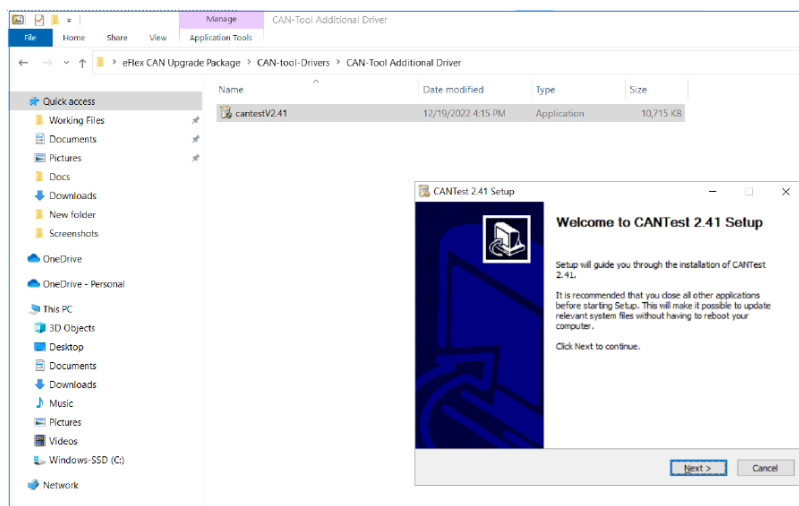
- You will see the success message as shown below. Click "Close" and close the "Device Manager" window.



- It's time to install an additional document. To do so, first open "eForce CAN Upgrade Package" folder. Then, open the "CAN-tool Drivers" folder and afterwards open the "CAN-tool Additional Driver" folder. Now you can see a file titled "cantestV2.41".

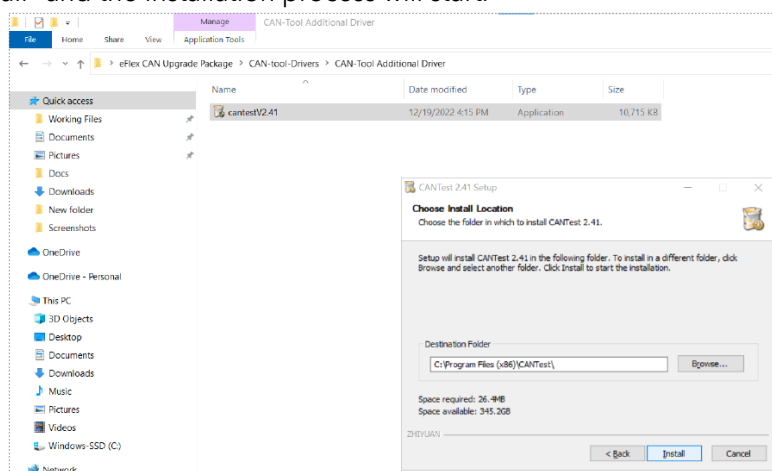


- Double-click "cantestV2.41"

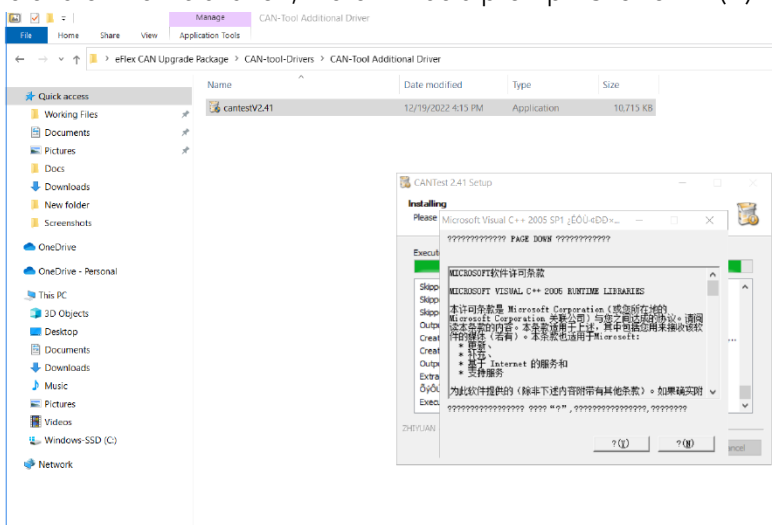




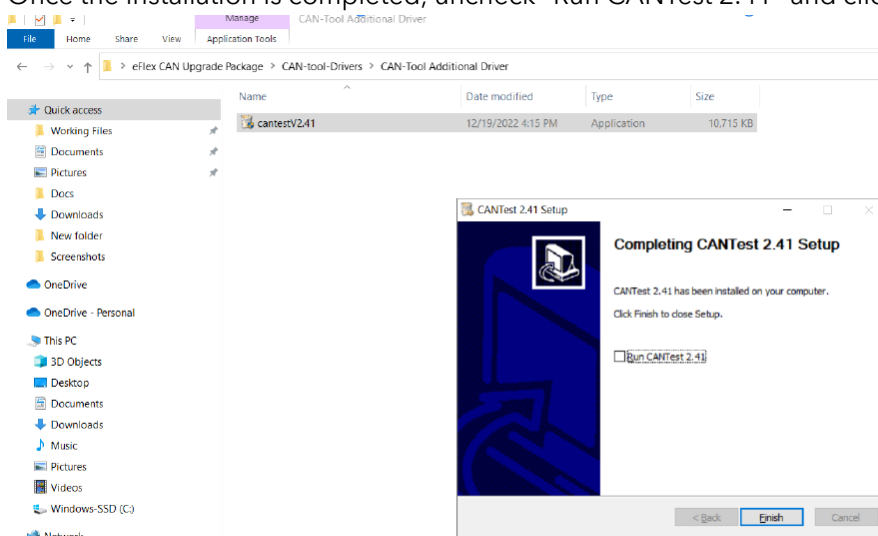
11. Then click "Install" and the installation process will start.



12. Almost at the end of the installation, there will be a prompt. Click on "? (Y)".



13. Once the installation is completed, uncheck "Run CANTest 2.41" and click "Finish".



14. Go back to folder "eFlex CAN Upgrade Package".



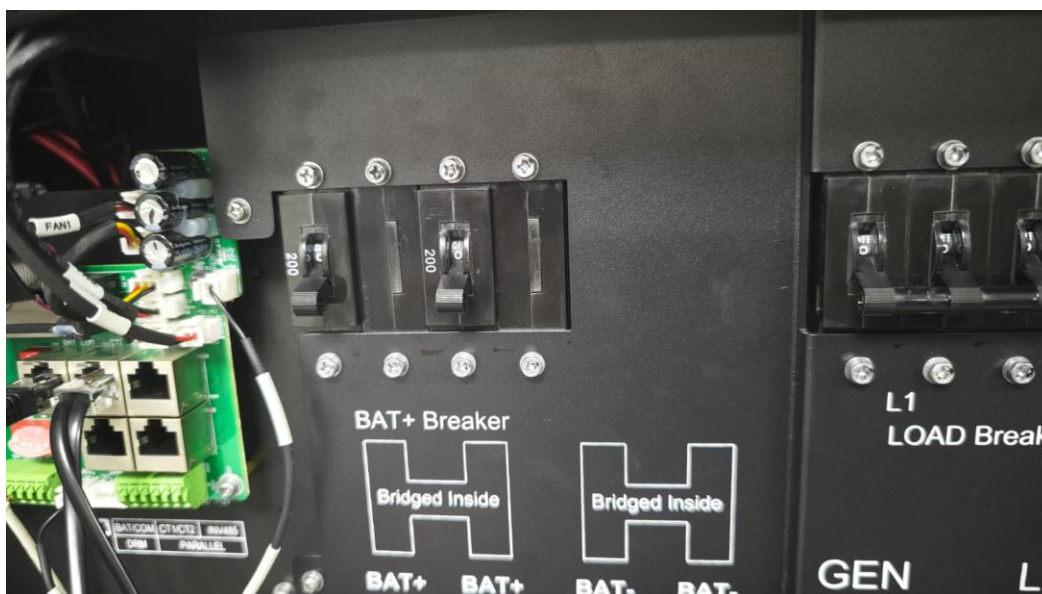


## PROCEDURE

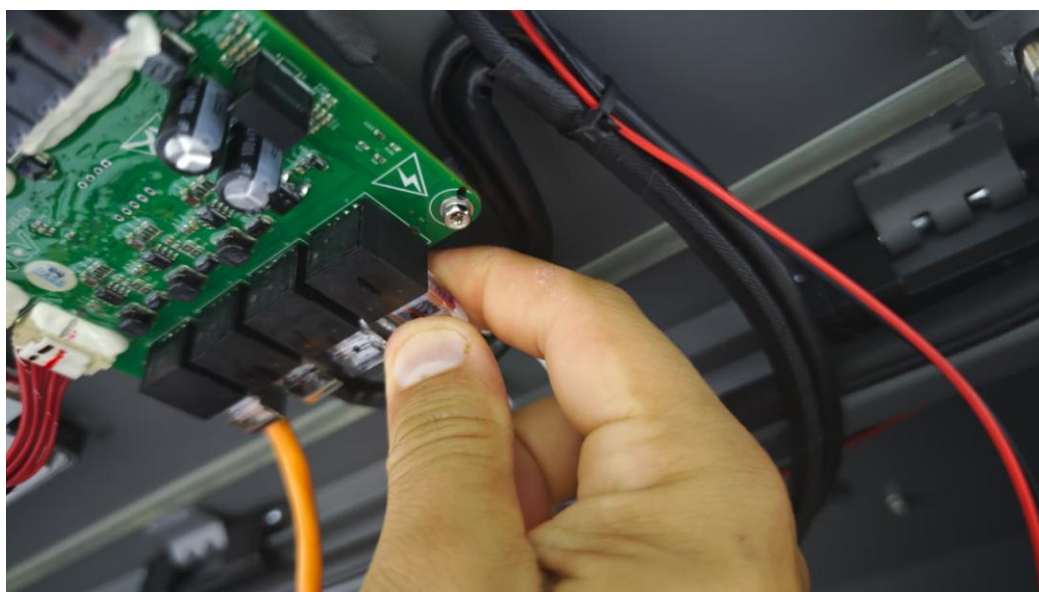
There must be no current flow to or from any battery in the system during the firmware update process. It is a good idea to have battery breakers on all inverters in the system in the 'OFF' position.

**Firmware must be updated on one battery at a time. It is not necessary to disconnect battery to inverter cable.**

1. Make sure that both cables that came with the CANtool (USBCAN) are connected to the CANtool. Then, make sure that the USB cable is connected to the computer and that the ethernet cable is connected to either of the two ethernet ports.
2. Turn off the inverter battery breakers. In off-grid applications, this will shut down the loads.

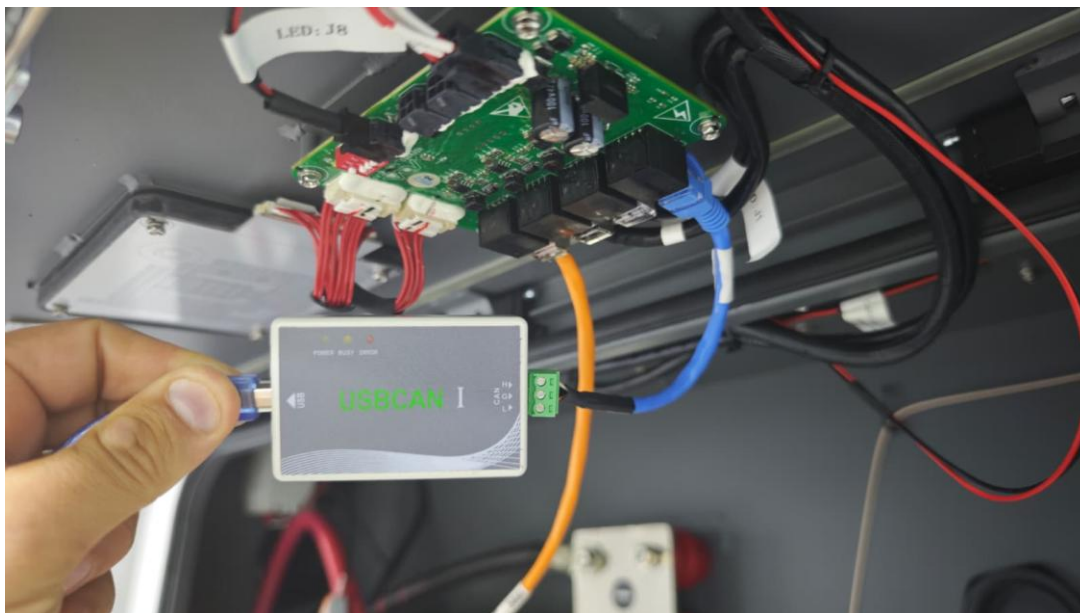


3. Remove the terminator on the eWay,



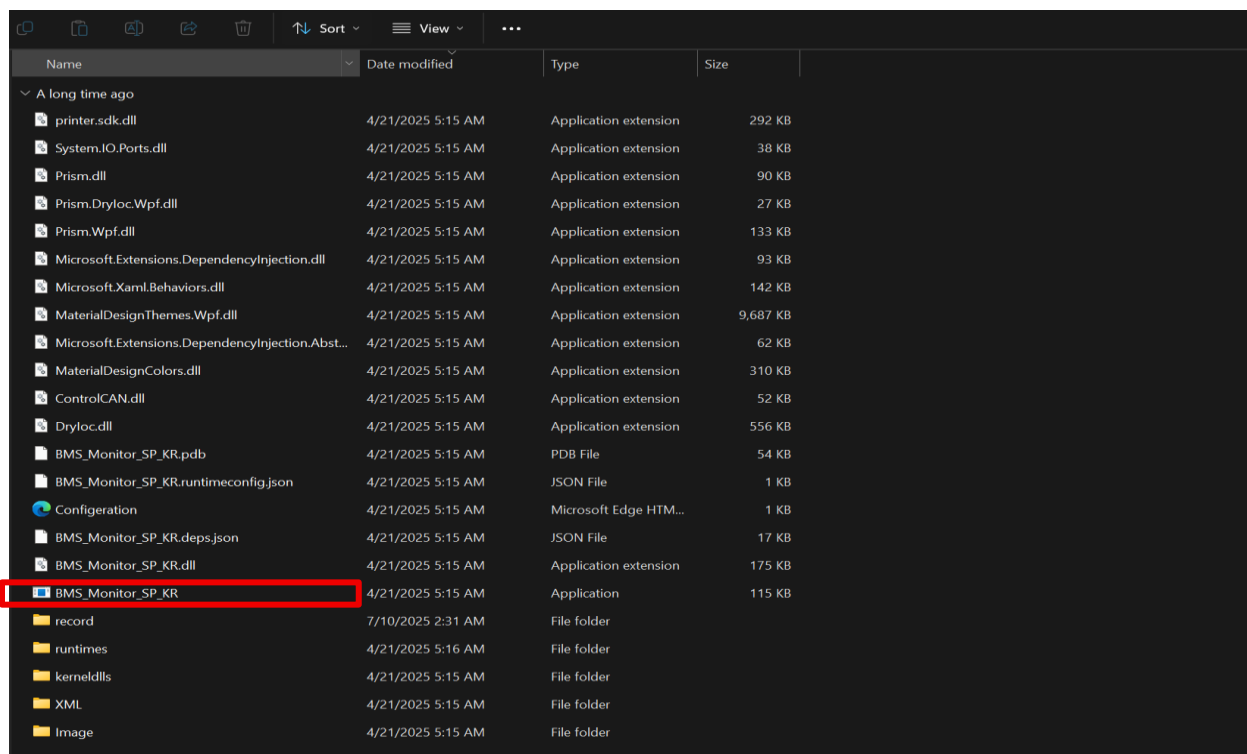


4. Plug the CAN tool. Do this while the battery is On.



## EFORCE BMS FIRMWARE UPDATE

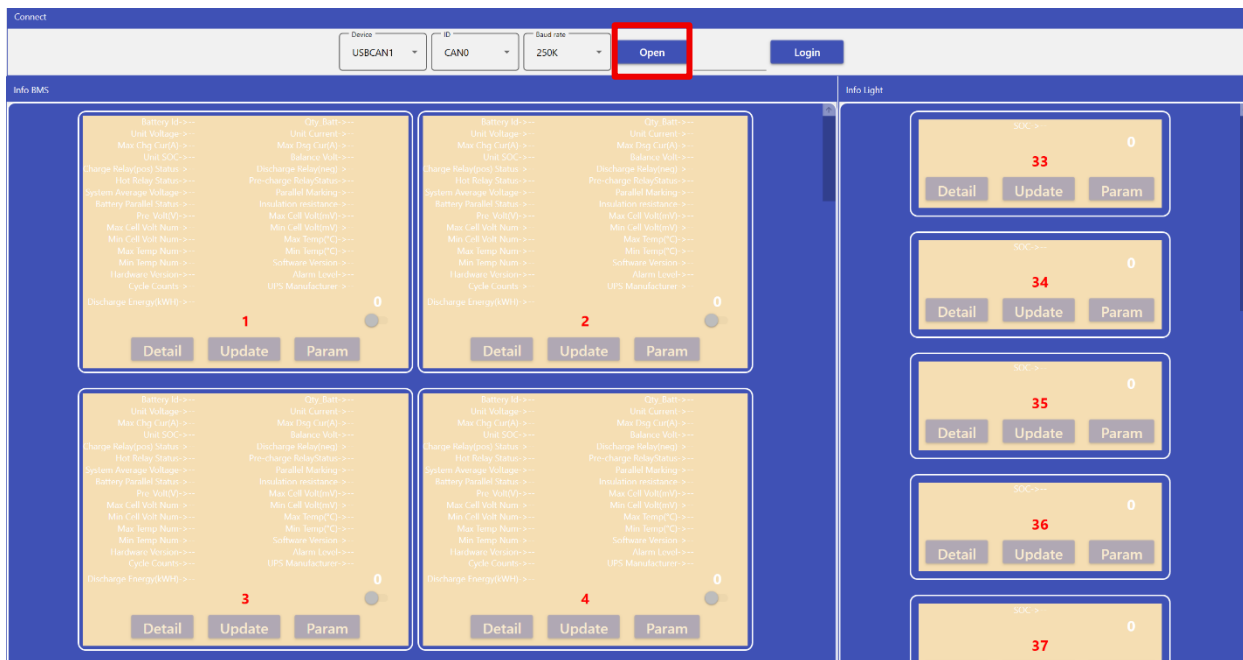
1. Open the Upper Computer Software named **BMS\_Monitor\_SP\_KR**







2. Once the software is opened, click the **Open** button.



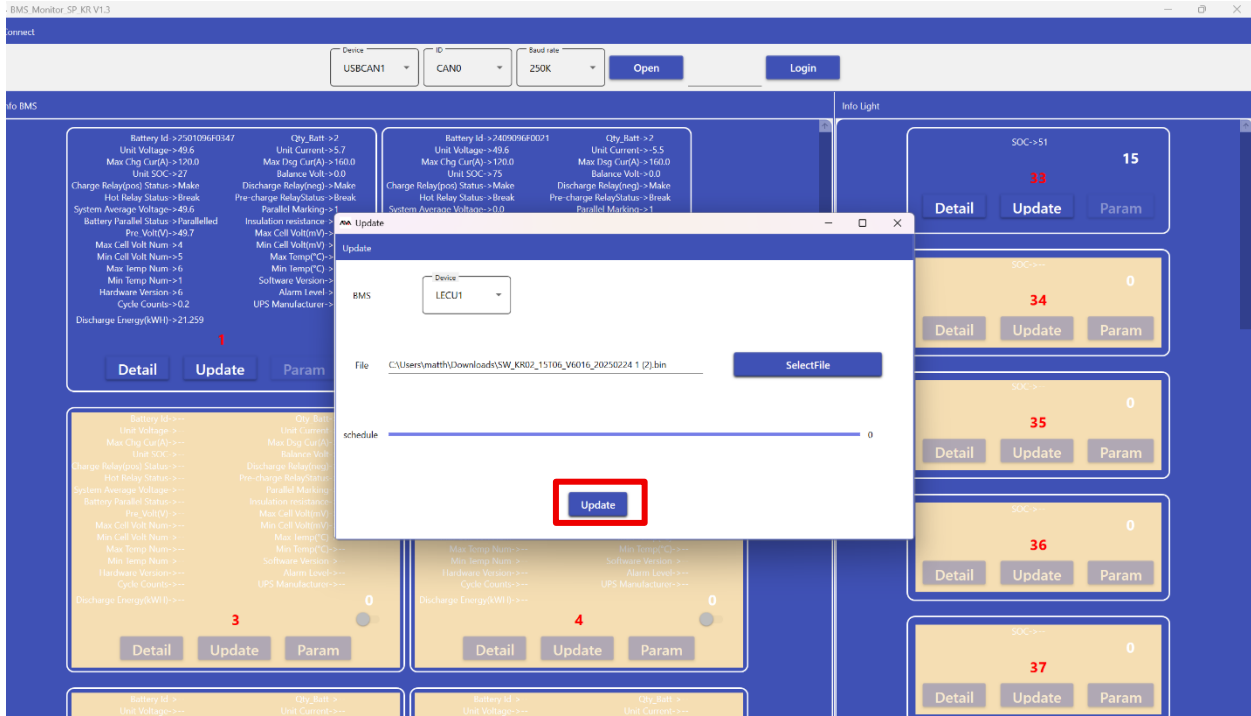
3. Make sure the battery data populates as shown in the image below. If it does not, double-check that the cables are properly connected to the CANtool. **Pin Orange** goes to port **L**, **Pin Orange white** goes to **H**. Next Click on the **Update** button



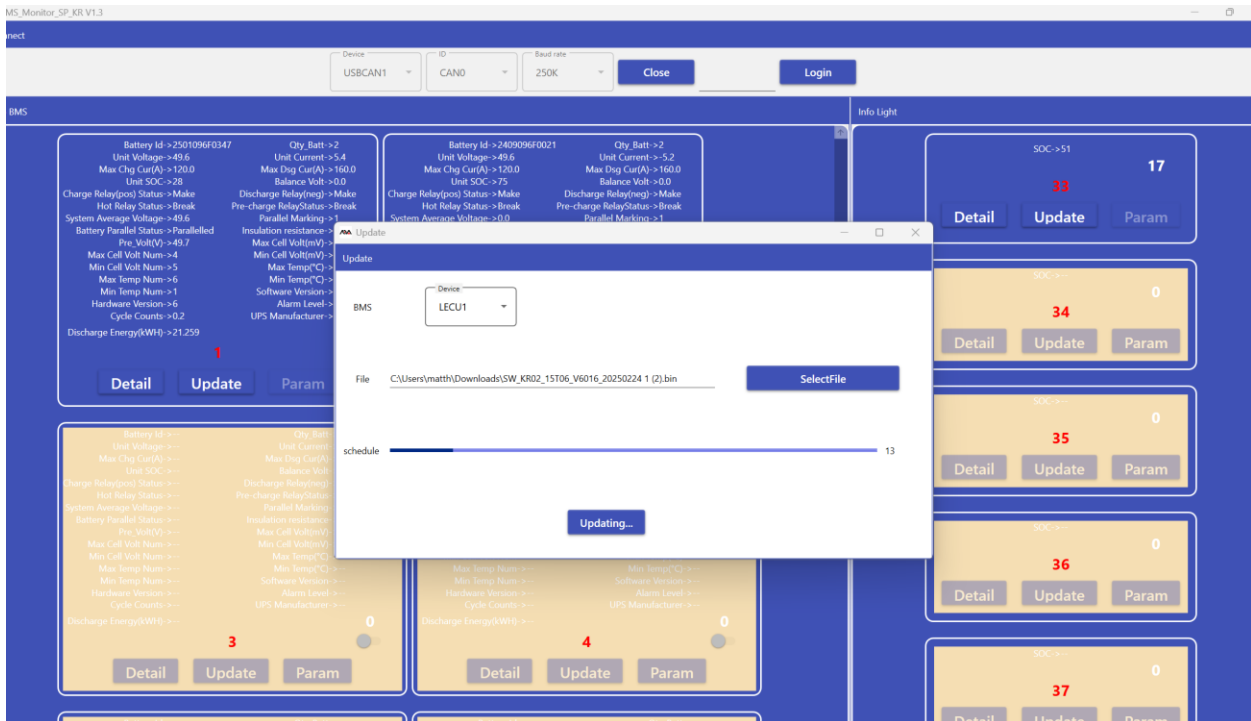
4. Click **SelectFile** and choose the downloaded BMS firmware file.



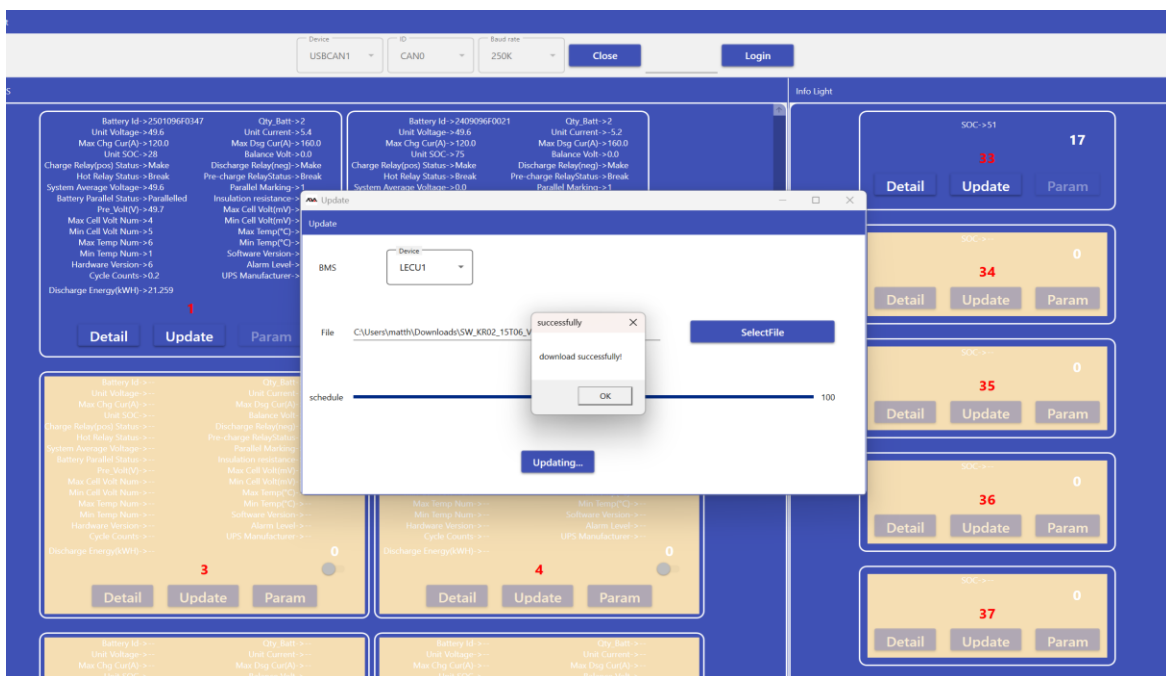
5. Click on **Update**



6. Make sure the update is progressing until a message **“download successfully”** reports once its finished.



7. Once the firmware has finished and displayed the download successfully message, remove the Can Tool and reboot the system.



## LED FIRMWARE UPDATE

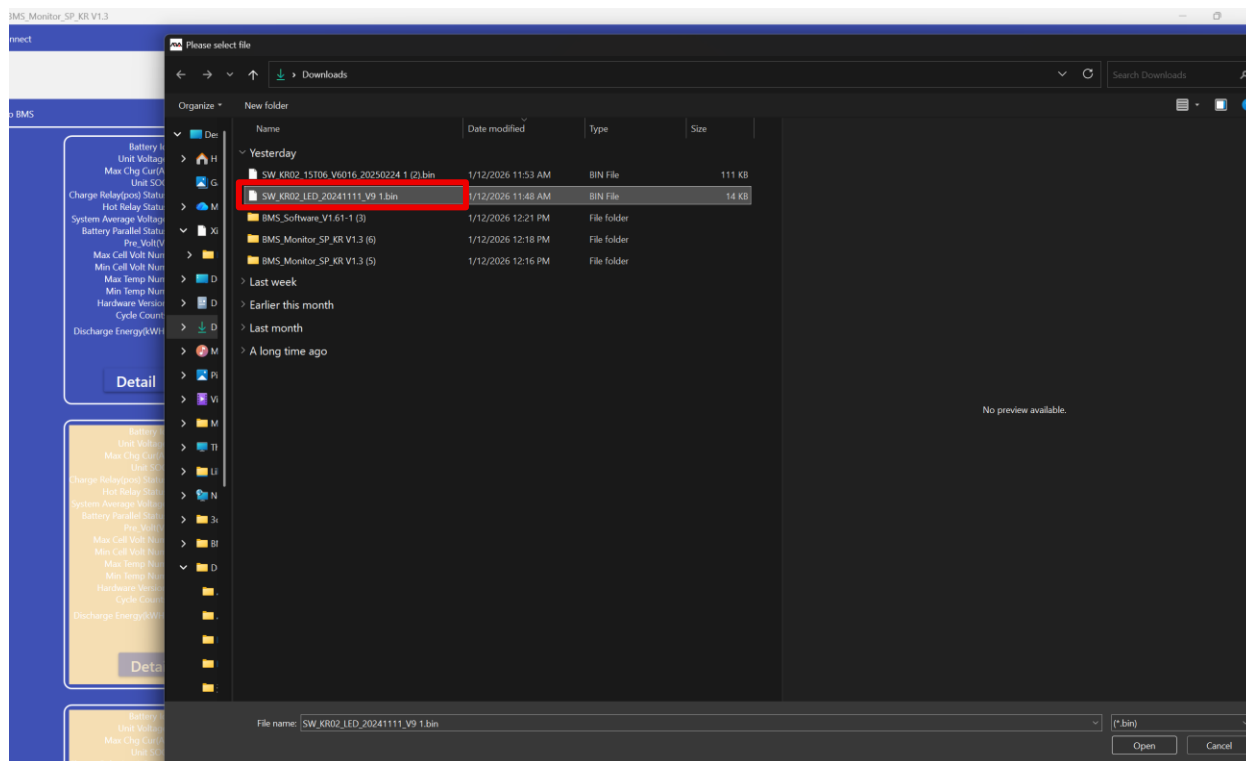
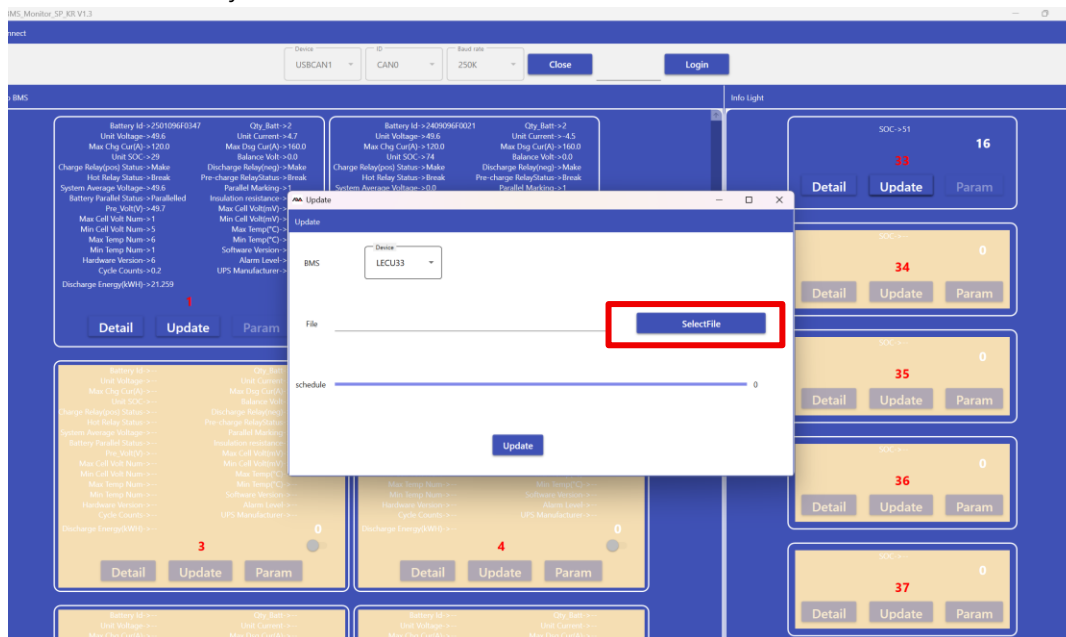
**⚠ Before Proceeding with this procedure, you must update the BMS firmware first. Failure to do so may result in a bricked system.**

1. Select **Update** on the **Info Light** section



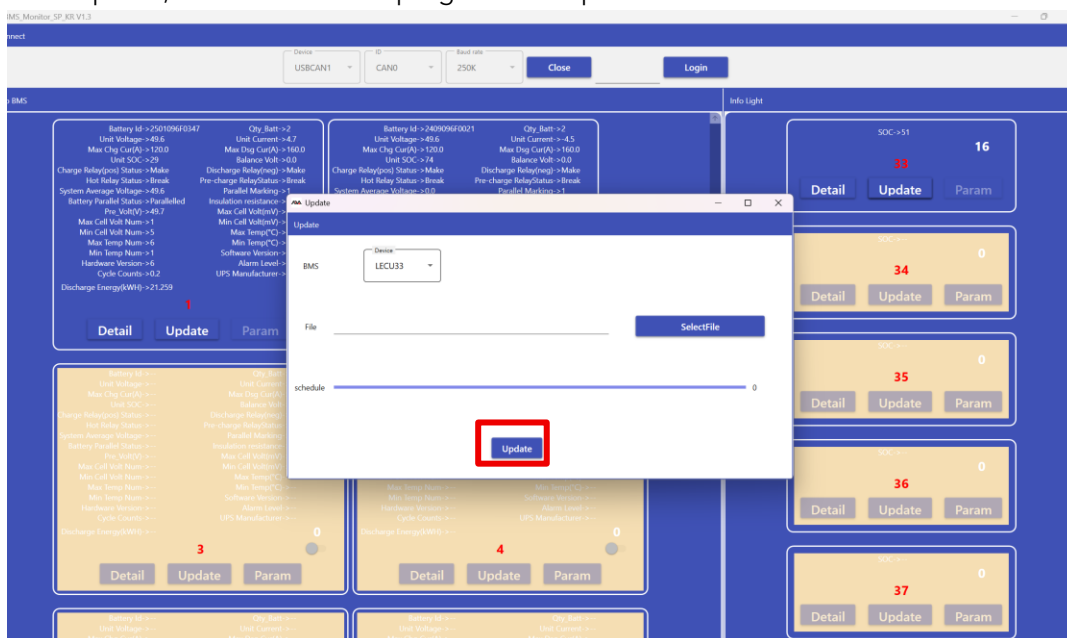


- Next, click on SelectFile and select the LCD bin file. Do not Update using the BMS firmware as this will brick the system.





3. Click Update, there should be a progress bar. Update takes less than 5 seconds.



4. Once firmware has completed, remove the CANTool and reboot the battery.

